

EXTREME APPLICATIONS



RAI



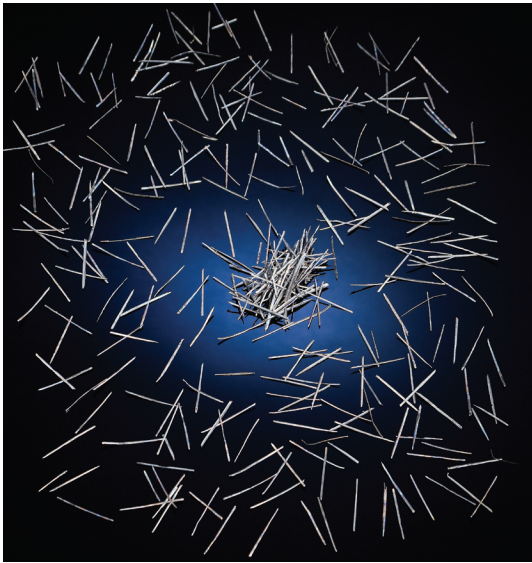
CONTACT US FOR ALL YOUR FIBER REQUIREMENTS:

9636 South 219th East Ave. • Broken Arrow, OK 74014
 800-331-3270 • 918-455-8485 • 918-455-9321
 www.rai-1.com



REFRACTORY ANCHORS, INC.

Melt Extract



MELT EXTRACT NEEDLES are the most widely accepted and economical needle additive used within the refractory industry. Melt Extract needs are offered in a wide range of chemistries, lengths and diameters. Years of experience have shown that Melt Extract Needles are the product of choice when gunning refractory due to their ability to flow easily through hoses without clogging.

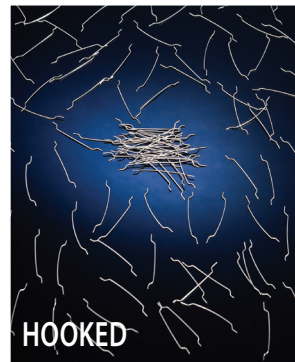
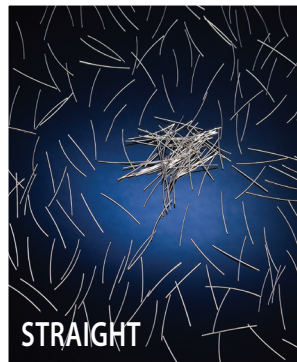
RAI offers Melt Extract needles in a variety of lengths and alloys.

Lengths: 3/4" • 1" • 1-1/4" • 1-3/8" / Diameters = .015" - .020"

Melt Extracted Stainless Steel Fibres

TYPE	N	Cr	C	Mn	Si	S	P
AISI 430	—	16-18	<0.12	1.0	1.00	<0.03	<0.04
AISI 446	—	23-27	<0.20	1.5	1.00	<0.03	<0.04
AISI 304	8-10.5	18-20	<0.08	2.0	1.00	<0.03	<0.045
AISI 310	19-22	24-26	<0.25	2.0	1.50	<0.03	<0.045
AISI 316	10-14	16-18	<0.08	2.0	1.00	<0.03	<0.045
AISI 330	33-37	14-17	<0.15	2.0	1.50	<0.03	<0.045

Cold Drawn



COLD DRAWN STAINLESS STEEL NEEDLES have gained wide acceptance outside the US. Cold Drawn Needles acquire their exceptional strength from the cold drawn process. Stainless steel cannot be hardened or strengthened by thermal processing such as heat treating. "Cold working" 300 series stainless is the only method available to add additional strength to the product. Cold Drawn Wire Needles also exhibit unmatched flowing characteristics when mixed with refractory. The cold drawn process adds

a very polished surface to the wire which prevents clumping when mixed with refractory. This quality was recognized by the world's largest oil refiner consequently making Cold Drawn Needles the exclusive reinforcement needle for their pre-cast shapes. These enhanced flowing characteristics coupled with the superior strength of the cold drawn wire can reduce the needle requirements by as much as 50%. Cold Drawn Needles are rapidly becoming the global choice for refractory reinforcement.

RAI offers Cold Drawn Stainless Steel Needles in three configurations. Straight, Hooked, Wavy.

All three configurations of Cold Drawn Needles *flow like water.*

Cold Drawn Stainless Steel Needles

TYPE	Ni	Cr	C	Mn	Si	S	P
AISI 304	8-11	18-21	<0.12	1.0-1.5	1.5-3.0	<0.03	<0.04
AISI 310	19-21	24-26	<0.12	1.0-2.0	1.5-3.0	<0.03	<0.04

Lengths: 1" • 1-1/4" • 1-3/8" / Diameters: .013" & .020"